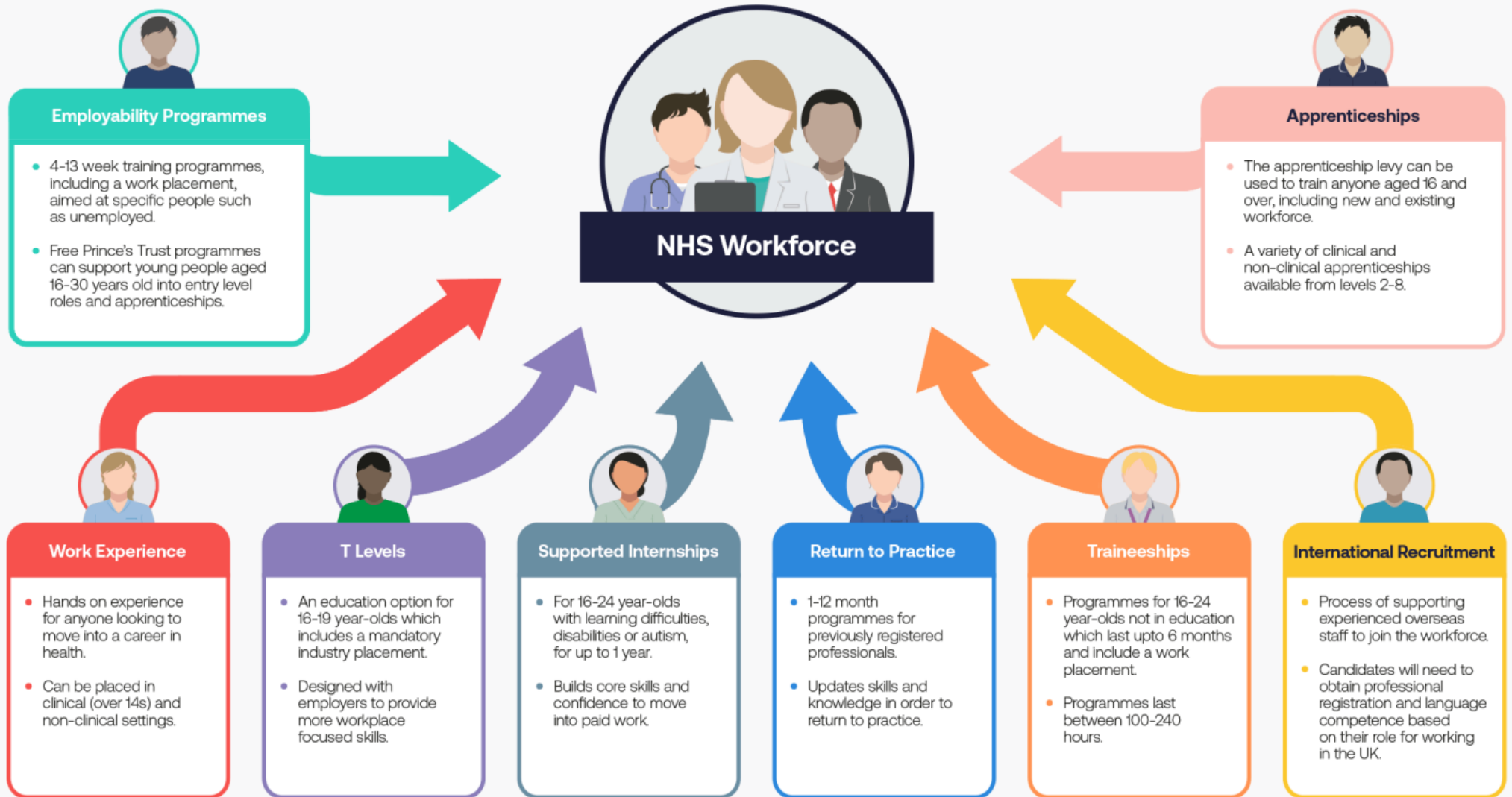


# Routes into the NHS

Routes to support your traditional talent pipelines and workforce supply. Many of the routes can work together or be a step to another one.



**Further information:**

• [www.nhsemployers.org/education-and-training](http://www.nhsemployers.org/education-and-training)

• [www.nhsemployers.org/princestrust](http://www.nhsemployers.org/princestrust)

• [www.nhsemployers.org/international-recruitment](http://www.nhsemployers.org/international-recruitment)